

# OmniDR



## Broadcast/IT Disaster Recovery Appliance

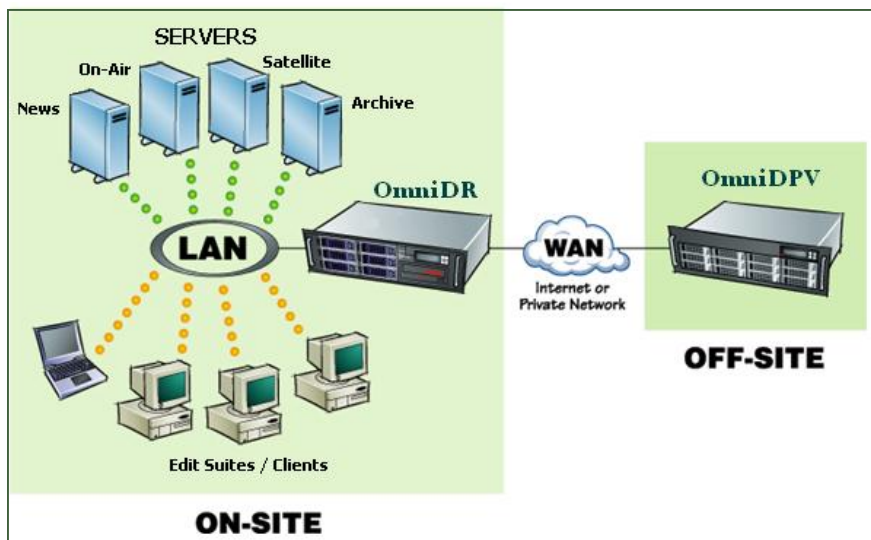
### Plug-and-Play Disaster Recovery Appliance

With the mountains of electronic data being generated in today's online world, the ability to recover lost data is not just a simple luxury, but a fundamental part of doing business. While the definition and monetary value for the timely recovery of a failed server or client can vary from organization to organization, one unarguable fact is that downtime costs money, and system downtime losses are an expense not clearly perceived in most organizations.

Few broadcast organizations are actually prepared for a catastrophic total system failure where not only a data loss may be experienced, but the entire operating system, applications, settings, patches and more are lost, reducing their system to "bare metal" while the clock ticks away costly downtime minutes.

Bare Metal Recovery (BMR) is often considered a supplemental layer of protection that can help insulate an organization against unnecessary downtime. While file-by-file backup and restore software is excellent at protecting against data loss, there is an inherent disadvantage in being able to quickly return an unbootable machine to a fully operational state. The shortcomings are the many steps required to perform a file-by-file recovery, and the lack of guarantee that every operating system change has been reinstated even after a restore. Thus, BMR should actually be a vital part of any company's disaster recovery plan, not just an afterthought.

Computer Upgrade's **OmniDR** disaster recovery appliances are a perfect addition to any Broadcast or IT organization looking to ensure fast, consistent system recovery time objectives for a wide variety of servers, clients and workstations. A single **OmniDR** appliance provides advanced data protection that allows restoration of failed systems without the need to reformat hard drives, re-load an operating system, device drivers, or any of the applications and databases. An **OmniDR** appliance can even restore to a new hardware platform that may not match the original system configuration (certain configuration restrictions may apply).



### OmniDR Disaster Recovery Appliance Features

- Integrated, turnkey network-attached appliance solution for data and system protection
- Provides disk-to-disk, high-speed data backup and bare-metal recovery
- Off-site electronic vaulting/archiving and automated bare-metal system recovery
- Cost-effective ROI and performance for small to mid-size businesses
- Over 24 operating systems supported from a single user interface

### Advanced Bare-Metal Recovery

- Supports HOT on-line and COLD off-line bare-metal recovery.
- Quick restore of failed system without hard drive reformat, operating system, device driver, applications or databases re-install.

### Point-in-Time File Backup

- Provides the ability to restore files, folders and systems to any day in a chosen recovery window up to (14) or (30) days, depending on **OmniDR** licensed storage capacity.



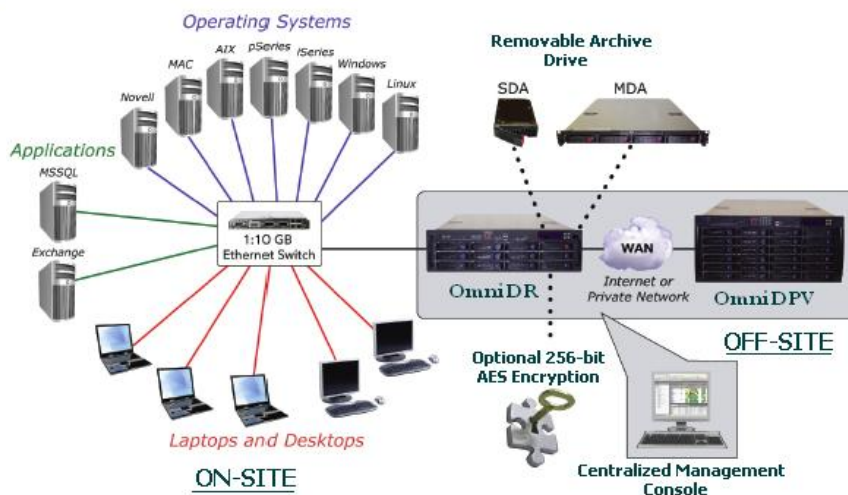
# OmniDR



## Disaster Recovery Appliance

### Hard Disk-based Archiving (Vaulting)

- All **OmniDR** appliances offer full support for true hard disk-based archiving.
- Disk archiving provides a level of offsite protection, reliability and recovery performance not possible with tape.
- All **OmniDR** appliances come with full support for single drive archiving.
- Multi-drive Archiving options offer up to 4 drives for a total of 3TB, typically accommodating between 6TB—10TB (integral compression) of user data, depending on data type.



### Centralized Management Console

- Provides centralized site-level data protection and monitoring for any supported servers, desktop and laptop systems.
- Intuitive Web-based monitoring tool provides individual backup and vaulting/archiving activity status for any **OmniDR** on the network.
- Secure remote access
- Hardware status alerting (SNMP)
- Email notification

### Data Vaulting/Archiving Option (OmniDPV)

- Automated off-site data vaulting/archiving for system and site disaster recovery verification.
- Data Protection Vaults (**OmniDPV**) provide off-site data and system protection.
- Multiple **OmniDR's** can be linked to a single **OmniDPV**, located at a remote location or hosted site.
- Each site **OmniDR** updates the corresponding **OmniDPV** automatically, eliminating the need for removing, transporting and storing tapes.
- All **OmniDR's** are fully Vault Ready.

### Performance

- Backup ~ 2GB/minute maximum backup throughput per client, up to (7) clients per **OmniDR**.
- Compression ~ 2X to 20X depending on data type.

### Scalability

- Between (14) and (30) day on-line retention period depending on **OmniDR** configuration and storage licensed.
- **OmniDR/SFF** ~ up to 200GB
- **OmniDR/2000** ~ up to 1TB
- **OmniDR/3000** ~ up to 2.5TB
- **OmniDR/5000** ~ up to 5TB

### Application-specific Support

- Microsoft Exchange 2003 Continuous Protection
- Microsoft Exchange 2000, 2003 Store Level Backup
- Microsoft SQL 2000, SBS, 2005
- Novell Groupwise 6.02, 7.02
- VMware GSX, GuestOS Support
- Other applications may require interaction by user.

### Certifications

- CE, CSA, FCC, UL





# OmniDR



## DR Appliance Specifications



Model	OmniDR/SFF	OmniDR/2000	OmniDR/3000	OmniDR/5000	OmniDPV/2000	OmniDPV/3000	OmniDPV/5000
<b>Drives</b>	2 SATA	6 SATA	12 SATA	24 SATA	6 SATA	12 SATA	24 SATA
<b>Protected for a 30 Day Retention Period</b>	XL 50GB GL 150GB TL 200GB	1.0TB	2.5TB	5.0TB	3TB	6.6TB	13.2TB
<b>Total Expansion</b>	NA	60TB	150TB	150TB	60TB	150TB	150TB
<b>Configuration</b>	Mirror	RAID 5	RAID 5	RAID 5	RAID 5	RAID 5	RAID 5
<b>Memory</b>	1GB	2GB	2GB	4GB	2GB	2GB	4GB
<b>Compression</b>	Software Only	Software Std. Hardware Opt.	Hardware Compression	Hardware Compression			
<b>Network</b>	1Gb Ethernet	2 x Gb Ethernet	2 x Gb Ethernet	2 x Gb Ethernet	2 x Gb Ethernet	2 x Gb Ethernet	2 x Gb Ethernet
<b>Optional Archive Drive</b>	250GB 500GB 750GB 1TB	250GB 500GB 750GB 1TB	250GB 500GB 750GB 1TB	250GB 500GB 750GB 1TB			
<b>Physical</b>							
<b>Power Supply</b>	1 x 200w	1 x 460w std.	1 x 600w std.	3 x 1350w std.	1 x 460w std.	1 x 600w std.	3 x 1350w std.
<b>AC Voltage</b>	120/240	120/240	120/240	120/240	120/240	120/240	120/240
<b>Current/Max</b>	3 amp max	5 amp max	7 amp max	12 amp max	5 amp max	7 amp max	12 amp max
<b>Format</b>	desktop 15" dx14"wx5"t	2U rack mount	3U rack mount	5U rack mount	2U rack mount	3U rack mount	5U rack mount
<b>Weight</b>	16 lbs	40 lbs	70 lbs	100 lbs	40 lbs	70 lbs	100 lbs

OmniDR Supported Platform Operating Systems

OPERATING SYSTEM	BARE-METAL	HOT BMR	FILE LEVEL	OPERATING SYSTEM	BARE-METAL	HOT BMR	FILE LEVEL
AIX 4.x / 5.x pSeries			√	SCO 5.0.6	√	√	√
Dec Alpha			√	SGI Irix			√
FreeBSD 3.6 and above	√		√	Solaris 2.5-2.10		√	√
HP-UX 9.x / 10.x			√	Solaris x86	√	√	√
i5/OS V5R2			√	Unixware 7.13 / 7.19	√	√	√
Linux/GNU x86-32	√	√	√	Windows NT	√	√	√
MAC OS/X 10.2-10.4	√		√	Windows 2000 / 2003	√	√	√
Netware 5.x / 6.x	√		√	Windows 2003 64-bit	√	√	√
Novell OES-Netware	√		√	Windows Small Business Server	√	√	√
SCO OpenServer 5	√		√	Windows 95/98/ME/XP	√	√	√